

## Construction of Section 3 of the Mondragón, Elorrio and Bergara section, forming part of the AV (Basque Y)



## Restoration of the River Cortazar using bioengineering techniques through:

- Branch mats
- Revegetated breakwaters
- Staking



All these techniques are carried out using material sourced from the riverbed itself or the surrounding area, in order to prevent the introduction of diseases or invasive species.



These techniques provide protection against flooding by minimising slope erosion and stabilising the soil; furthermore, thanks to their rapid growth, they minimise the time taken for the **European mink's** habitat to regenerate.

## Extension of two sections of the Lagos de Moreno bypass.



## Wildlife rescue and deterrence activities within the Lagos de Moreno project area:

- *Kinosternon integrum* (swamp turtle)
- *Crotalus molossus* (rattlesnake)
- *Sceloporus* sp. (lizard)



The main objective of wildlife rescue and relocation is to minimise the negative impacts on wild species during the project's construction activities, ensuring their safe relocation or movement to suitable adjacent habitats.

## Social Reforestation Day 2025 “La Manga” area, San Miguel Ajusco Communal Lands, Tlalpan Borough, Mexico City.



The environmental restoration initiative was successfully carried out across an area of 9,400 m<sup>2</sup>, with around 380 volunteers taking part, all committed to the recovery of ecosystems and the conservation of local biodiversity.



During the event, trees, herbaceous plants and shrubs were planted, notably including the planting of **Pinus montezumae**, a key species for the recovery of forest areas, as well as the planting of cosmos, a herbaceous plant that helps improve soil quality and enhances the area's landscape.

## Extension of the Puebla de San Julián bypass, forming part of the new Ourense–Monforte de Lemos–Lugo high-speed rail line.



**Work in the temporary** earth storage area has been temporarily halted following the discovery of a **colony of sand martins (*Riparia riparia*)**.



Conducting baseline and final surveys of birdlife during the breeding season of the sand martin (May–September).



It is recommended that the gradient of all temporary spoil heaps on construction sites be reduced to a shallower angle (<math><60^\circ</math>) to prevent burrowing birds from starting new burrows during the breeding season.

## Construction of the Ibaizabal bicycle lane section: Erletxes-Larrabetzu



Removal of **2,274 m<sup>2</sup>** of the  
invasive species *Cortaderia Selloana*,  
thus improving the environmental  
quality of green areas and, above  
all, preventing the possibility that  
existing specimens could spread and  
invade the surrounding natural areas

## Access to terminal T1 of Barcelona Airport



# Installation **75** bird-saving devices



Bird guards are accessories designed to increase the visibility of overhead power lines, preventing birds in flight from colliding with them by placing them on the conductors and ground wires

## Maintenance of the MT/BT network with e-distribution



# Adaptation of **40** electrical supports in the Alt Empordà area to promote the reintroduction of the *Eremit Ibis* in Catalonia



The objective is to encourage this species, which has been extinct in Europe for more than three centuries, to live here in the future



In addition, this measure will also benefit many other species of birds that are present in the area, such as the white stork, the whitethroat and the birds of prey, large birds that nest, hibernate or migrate to the Aiguamolls de l'Empordà and that, thanks to these actions, their risk of electrocution will be minimized

## Volunteering for forest maintenance Cofrecito, Mexico



**The cleaning and clearing of forests  
is an essential preventive task  
for our health and economy, and  
fundamental to avoid forest fires**

Forests generate positive externalities that benefit  
us all:



They are important carbon  
dioxide sinks

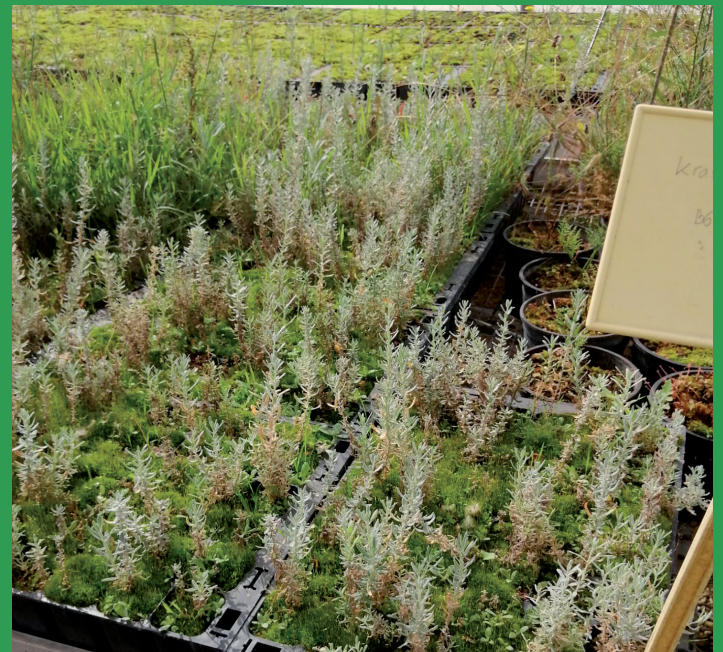


Erosion control



Improve hydrology

## A-68 motorway. Section: El Burgo de Ebro-Fuentes de Ebro, in Aragón



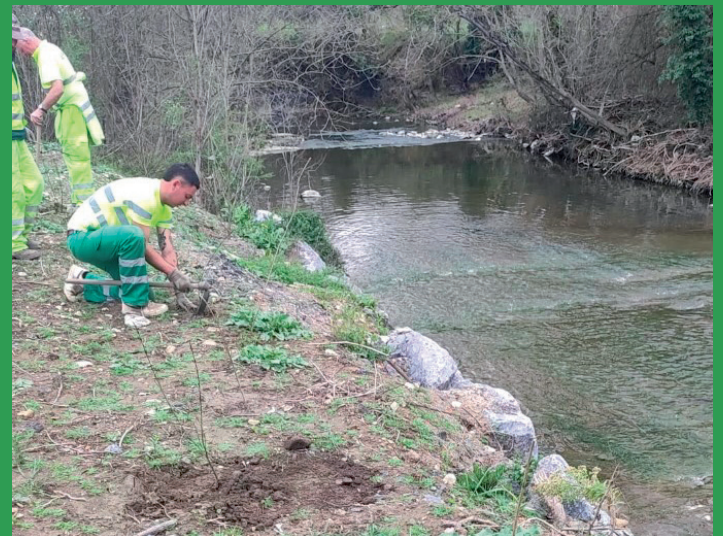
Translocation of **750** seedlings of  
the endangered species *Al-Arba*

## Rearrangement of accesses on the N-634 road as it passes through Euba in Amorebieta - Etxano, Bizkaia



Planting of **1.615** plant units and  
**10.937 m<sup>2</sup>** hydroseeding

## Sewerage collectors in the Upper Nervión basin in Araba and Bizkaia, Basque Country



Planting of **3.102** trees and  
**2.243** shrubs and planting of  
**46.635 m<sup>2</sup>**

## New seafront promenade in the northern area of Puerto de Sagunto, Valencia



Planting of **26** palm trees and  
**4.300 m<sup>2</sup>** of herbaceous and  
aromatic plants

## Execution of safety improvement works on the C-66 road between Cornellà de Terri and Serinyà, Girona



**56.000 m<sup>2</sup>**  
hydroseeding

## Final design of the civil works for the Bogatell power station, Barcelona



**Transplanting of 16 Australian oaks, 5 *Norfolk* oaks and an olive tree to the new locations indicated by the Barcelona City Council.**



Urban trees provide multiple benefits for cities and their inhabitants, so it is essential to care for and protect them

## Maintenance contracts for Endesa in Girona



# Bird protection areas against collision and electrocution on high voltage power lines

**123** Bird protection areas installed



Protection of ecological heritage: protected species and fires



Maintaining the quality of electricity supply

## Implementation of the Belém Integrated Transport System (BRT Metropolitano), Brazil



### Monitoring campaign of birdlife

**54** Birds  
detected

**4** Highly vulnerable  
species



The 5 bird monitoring points are of utmost importance to maintain the ecological balance



The census of avifauna was carried out using a combination of two methods: auditory and visual, without the use of invasive techniques

## Implementation of the Belém Integrated Transport System (BRT Metropolitano), Brazil



**Explanatory campaign on measures to be taken to prevent the proliferation of synanthropic fauna.**

**208** Employees participated in the sustainable dialogues



Conducting 66 interviews in nearby homes to study wildlife and raise awareness among neighbours



Realisation of a school awareness campaign through playful activities in a school near the construction site